

Print Base: VERONA

Wide width vinyl wallcovering with a linen texture | Strippable | Supplied as meterage or matched panels

Composition: Ultra-white embossed vinyl face. Backing is polyester/pulp non-woven
Printed width: 130cms | 51.2 inches

Weight: 440g/m² | 13 oz/yd²
Recommended usage: Commercial wall covering
Can be used in wet areas if properly sealed

PERFORMANCE

Fire rating: AS3837 [DOWNLOAD](#)
AS3837 Group No [DOWNLOAD](#)

FIRE TESTING

ASTM-E84 Tunnel Test : Class A
NFPA286 Corner Burn Test : Class A
EU Class Flame (En 15102) : Passed
BS476 Part 6&7: Passed
CAN/ULC-S1022: Passed

*Meets or exceeds requirements for flame spread, smoke developments and flashover.

CARE & MAINTENANCE

Do not scrub wallpapers with abrasive materials as this could cause the print to be lifted.

Listed below are the solutions that can be used for cleaning.

1. Clear warm water.
2. Mild soapy warm water, then rinse.
3. Light household cleaners, warm water, then rinse.
4. Do not use solvent based cleaning agents, lacquer thinners, nail polish remover, pine oil or cleaning agents containing bleach, which may cause discoloration over a period of time.
5. A cloth or towel should only be used to pat dry (not rub). Do not use manmade (i.e. polyester) sponges.

Type II Properties

Breaking Strength, lbs force

Machine Direction-warp: Exceeds Type II minimum of 50lbs.
Cross Machine Direction-fill: Exceeds Type II minimum of 55lbs.

Tearing Strength, Scale

Machine Direction-warp: Exceeds Type II minimum of 25lbs.
Cross Machine Direction-fill: Exceeds Type II minimum of 25lbs.

Cold Crack Resistance @ 20° F. No Change

Heat Aging (7days at 158° F) Does not become stiff, brittle, discolored or show loss of grain

Specification

Federal Specification: CCC-408-D Type II*
WA Specification: W-101 Type II

Mould/Mildew

ASTM-G21 Specifications Passed all requirements

Environmental

Made with Low VOC vinyl
Tested per CA-1350 Air Quality Standards
Cadmium and Lead Free Formulation

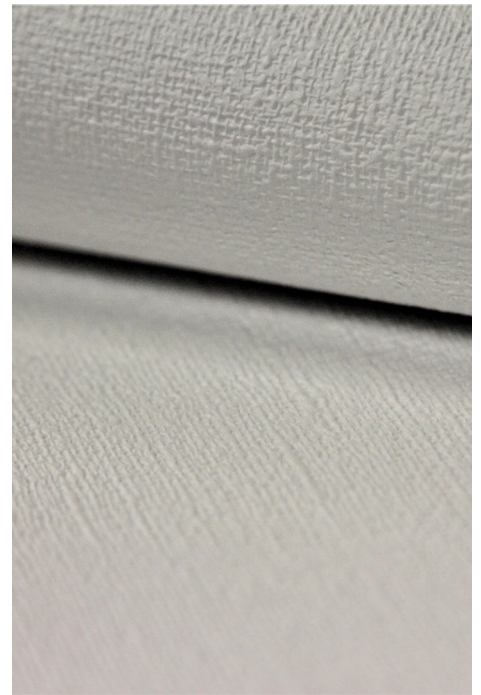
SUSTAINABILITY

We strive to follow principles of sustainability through all our business activities and the entire process from weaving to production. We print locally to order and only use water-based inks and recyclable bi-products. We regularly research the latest developments in sustainable textile production to ensure we are using all available innovations to reduce the environmental impact of both our production and products.



**Sustainable
Green Print**
✓ ✓ ✓ ✓

+61 2 9517 4600 | hello@sparkk.com.au
6 Gehrig Lane, Camperdown NSW 2050



WALLPAPER PRINT BASES

www.sparkk.com.au/substrates
September 2017