

Print Base: BLOCKOUT

Elegant blackout woven construction with 98% light resistance

Composition: 100% polyester face.
Printed width: 140 cms | 55 inches
Weight: 250 g/m² | 7.37 oz/yd²
Recommended usage: Commercial and residential drapery | Can be printed both sides

PERFORMANCE

Fire rating: AS 1530.3 [DOWNLOAD](#)

Colourfastness to light:
Test Standard ISO-BO2-1994 (Range across CMYK colours)

Rating 5 - 6/7

Colourfastness to washing:
Test Standard AS2001.4.15-2006 (Range across CMYK colours)

Rating 5

Colourfastness to drycleaning:
Test Standard AS2001.4.15-2006 (Range across CMYK colours)

Rating 4 - 4/5

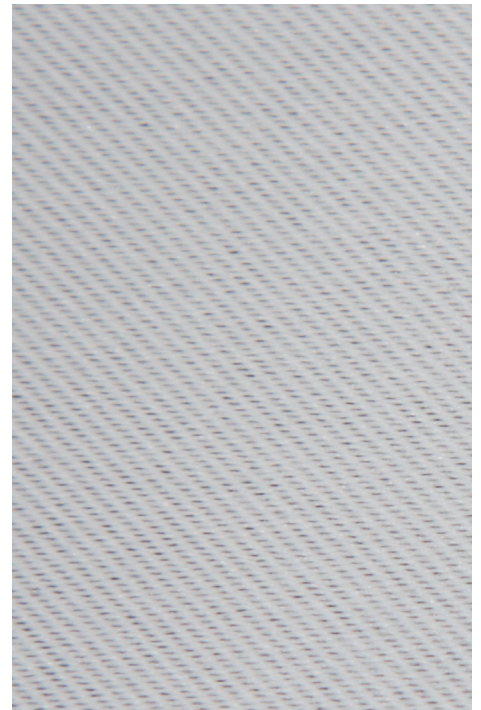
Colourfastness to rubbing:
Test Standard AS2687 - 1997 Class 4

Wet 4/5 Dry 5

CARE & MAINTENANCE

Machine washable at 30 degrees
Iron on medium heat
Tumble dry on low

Only use textile detergents
Use professional cleaners for best results



**Sustainable
Green Print**



SUSTAINABILITY

We strive to follow principles of sustainability through all our business activities and the entire process from weaving to production. We print locally to order and only use water-based inks and recyclable bi-products. We regularly research the latest developments in sustainable textile production to ensure we are using all available innovations to reduce the environmental impact of both our production and products.

+61 2 9517 4600 | hello@sparkk.com.au
6 Gehrig Lane, Camperdown NSW 2050



HIGH PERFORMANCE PRINT BASES

www.sparkk.com.au/substrates